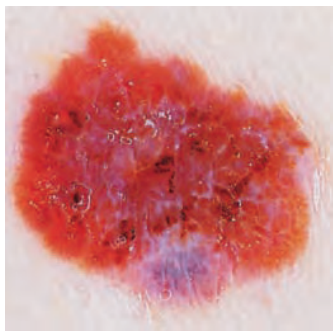


Early recognition of Malignant Melanoma is becoming increasingly important in Dermatology. In Germany the annual increase in reported new cases is between 5 and 10 %. In parts of the world with a fair-skinned population the incidence has almost doubled in the last 15 years. Early recognition and diagnosis is the key to improved healing rates. HEINE Optotechnik's long experience as market leader in Dermatoscopy has enabled us to set a new standard for image quality with the DELTA 20 Dermatoscope.

## HEINE DELTA 20® Dermatoscope

### Dermatoscope with LED illumination



For dermatoscopic examination of pigmented skin lesions and early diagnosis of malignant melanoma. Dermatoscopy oil is applied to the skin to make the outer skin layers more transparent. The DELTA 20 makes structure changes visible. The differential diagnosis of initial malignant melanoma and other pathologies is made easier and more accurate with DELTA 20.

- **High-resolution optics with achromatic lenses system.** 10x magnification, distortion-free edge-to-edge, very large, highly-detailed image.
- **LED illumination close to daylight.** 6 LEDs or, alternatively, lateral illumination from 3 LEDs for improved contrast, virtually unlimited working life.
- **Adjustable Eyepiece.** Individual focusing, range of correction -6 to +6 dpt.
- **Detailed compendium with photographic atlas included.** Simplifies the differential diagnosis of pigmented lesions.
- **Digital photography with the dermatoscope.** Digital camera Nikon Coolpix and Photo Adaptor. (For an overview of compatible, recommended Nikon Coolpix and other cameras, please visit [www.heine.com](http://www.heine.com)).

(For more information, see the DELTA 20 LED Dermatoscope Broschure).



DELTA 20 Dermatoscope	2.5 V LED	3.5 V LED
with contact plate 23mm dia. with scale and dermatoscopy compendium	<b>K-08.34.201</b>	<b>K-08.34.201</b>



DELTA 20 Dermatoscopy Set	2,5 V LED	3,5 V LED
Consisting of DELTA 20 Dermatoscope, contact plate 23mm dia. with scale, 10 ml dermatoscopy oil, dermatoscopy compendium, hard case, complete with BETA battery handle	<b>K-256.10.118</b>	
same, with BETA R rechargeable handle		<b>K-256.20.376</b>
same, with BETA TR rechargeable handle with transformer		<b>K-256.20.384</b>
same, with BETA NT rechargeable handle with NT 200 charger		<b>K-256.20.420</b>



Please note: BETA 3.5V rechargeable handles can be supplied with a Lithium battery (**X-07.99.381**) with increased capacity and no memory effect at extra cost. To order HEINE sets with 3.5V BETA handle with Li-ion battery technology, use the number "27" in the voltage designation, e.g. K-256.**27**.420 for DELTA 20 Dermatoscope Set with BETA NT handle and charger.



Accessories

for the DELTA 20 Dermatoscope



Accessories

Contact plate, 23 mm dia. without scale	K-00.34.203
Contact plate, 23 mm dia. with scale	K-00.34.204
Small contact plate, 8 mm dia. for the examination of inaccessible lesions	K-00.34.205
Dermatoscopy oil (pack of 6 x 10 ml) is applied to the external skin layers, making them transparent	K-00.34.005
Photo Adaptor for dermatoscope/digital camera (M52x0.75)	K-00.34.236
Adaptor cord (1.3 m) for instrument/handle	X-00.99.231
BETA Belt Clip for BETA handle	X-00.99.008
Photo accessory set (not shown) includes Photo Adaptor, Adaptor cord and BETA Belt Clip	K-00.34.229
Carrying-case for DELTA 20 and Photo accessories (not shown)	K-264.00.000

HEINE DELTA 10® Dermatoscope

Early detection of Melanoma

- The original Contact Dermatoscope, now with XHL Xenon Halogen Technology.
- 10x magnification. Large, high-resolution image.
- Solid metal construction. Durable and tough.
- Detailed compendium with photographic atlas included. Simplifies the differential diagnosis of pigmented lesions.



DELTA 10 Dermatoscope	2.5 V	3.5 V
incl. contact plate with graduated scale and bulb	K-01.34.001	K-02.34.001
same, without contact plate	K-01.34.002	K-02.34.002
<b>DELTA 10 Dermatoscope Set</b>		
in hard case with 10 ml dermatoscopy oil and spare bulb, with BETA battery handle	K-161.10.118	
same, with BETA R rechargeable handle		K-161.20.376
same, with BETA TR rechargeable handle with transformer		K-161.20.384
same with BETA NT rechargeable handle and NT 200 charger		K-161.20.420
XHL Xenon Halogen spare bulb	X-01.88.038	X-02.88.046



Please note: BETA 3.5V rechargeable handles can be supplied with a Lithium battery (X-07.99.381) with increased capacity and no memory effect at extra cost. To order HEINE sets with 3.5V BETA handle with Li-ion battery technology, use the number "27" in the voltage designation, e.g. K-161.27.420 for DELTA 10 Dermatoscope Set with BETA NT handle and charger.

## HEINE alpha+® Dermatoscope

### A Dermatoscope in compact form



High-quality instrument in compact form with 10x magnification. Adjustable focus. Threaded connector. Available with 3.5V XHL Xenon Halogen Technology for super bright illumination.

- ∴ **10x magnification.** Large, high-resolution image.
- ∴ **Solid metal construction.** Durable and tough.
- ∴ **Detailed, illustrated instruction book.** Makes differential diagnosis easier.

alpha+ Dermatoscope	2.5 V	3.5 V
alpha+ Dermatoscope, Head only, with contact plate	<b>D-01.84.101</b>	<b>D-02.84.101</b>
same, with alpha+ battery handle, dermatoscopy oil	<b>D-01.84.110</b>	
same, with alpha+ rechargeable handle and dermatoscopy oil (10 ml)		<b>D-02.84.111</b>
same, with alpha+ rechargeable handle, alpha+ NT200 B charger and dermatoscopy oil		<b>D-02.84.112</b>
XHL Xenon Halogen spare bulb	<b>X-01.88.034</b>	<b>X-02.88.053</b>

## HEINE mini 3000® Dermatoscope

### A Dermatoscope in a handy pocket format

► **NEW !**



Modern pocket dermatoscope in a compact design with high-quality optics. 10x magnification with focusing optics. Metal threaded connector. Can only be used with the mini 3000 handle system.

- ∴ **10x magnification.** Large, high-resolution image.
- ∴ **Solid metal construction.** Durable and tough.
- ∴ **Enhanced XHL Xenon Halogen Technology for more light.** Very bright, concentrated white light for perfect illumination.
- ∴ **Attachment clip with integrated on/off switch.** Secure. Switches off automatically when returned to the pocket.
- ∴ **Detailed compendium with photographic atlas included.** Simplifies the differential diagnosis of pigmented lesions.
- ∴ **2-piece handle and head.** Easy to maintain, flexible.
- ∴ **High-quality handle: Chrome-finish upper section/refined plastic.** Shockproof, sturdy, non-slip.
- ∴ **Replaceable batteries.** Size AA.

mini 3000 Dermatoscope	2.5 V
mini 3000 Dermatoscope with contact plate, mini 3000 battery handle and 10 ml dermatoscopy oil	<b>D-01.78.107</b>
mini 3000 Dermatoscope with bulb, without handle	<b>D-01.78.106</b>
XHL Xenon Halogen spare bulb	<b>X-01.88.109</b>

## Accessories

### for DELTA 10, alpha+ and mini 3000 Dermatoscope



Contact plate without scale for DELTA 10	<b>K-00.34.105</b>
same, for alpha+ (colour: blue)	<b>D-00.84.105</b>
same, for mini3000	<b>D-00.78.116</b>
Contact plate with scale for DELTA 10	<b>K-00.34.006</b>
same, for alpha+ (colour: blue)	<b>D-00.84.106</b>
same, for mini3000	<b>D-00.78.117</b>
Small contact plate, 8 mm dia. for the examination of inaccessible lesions	<b>K-00.34.008</b>
Dermatoscopy oil (pack of 6 x 10 ml) is applied to the external skin layers, making them transparent	<b>K-00.34.005</b>